

Points from the President: Game Changer



Kids love change. As they grow and develop, they have a thirst for learning. They want to try new things and gain new experiences. They get bored easily with the mundane. For some reason, many of us, as we grow up, begin to dislike change. We want to do things the same way we always have. We resist and put up our guard whenever someone tries to change our routine. I suppose we dislike change because we like to have more control of our environment and our circumstances.

This past three months has been a time of change at ESS. We have a new Operations Manager and a new Employment Manager. We have new projects, new customers and new systems. This change has been difficult. I have resisted. I felt sorry for myself, and tried desperately to retain some control of my life.

I'm coming out on the other side, and I realize that the change has been really good for us. We have fresh faces, new ideas and different perspectives. We are embracing the change and we are all looking for opportunities to help each other learn and grow.

Change is hard, but change is inevitable. When we accept change, we make progress. We become stronger and more flexible. We open ourselves to new opportunities and we begin to see the positives in doing things differently. I believe it is impossible to stand still. A person, or a company can only grow or decline. At ESS, we choose to grow and we choose to change, even when it is hard.

Paul

New Business

ESS Continues to grow as a result of a great Team—a Team that does the dirty jobs day after day without complaint or excuse.

Advocate BroMenn
Wellness Center, Adult
Daycare and Community
Clinic – Normal

Muscular Dystrophy
Association – Urbana

Fiberteq – Danville

Clifton Larsen Allen –
Bloomington

City of Effingham

St. Anthony Rehab
Center – Effingham

Genpact - Danville

*We  our
customers*

“Change is the law of life. And those who look only to the past or present are certain to miss the future.”

John F. Kennedy, Jr.



Employee of the Month



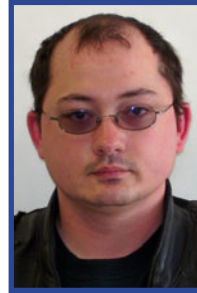
September 2015
MAE LAY



December 2015
CARLOS SPINKS



October 2015
ROBERT CRAIG



January 2016
JASON SMITH

November 2015
LARRY BOYD



Employee of the Month—Honorable Mention

Kathy Ball
Tiffany Bradfield
Beth Buchholz
Mary Ann Corbitt
Tes Cullen
Erica Duvall

Cris Gable
Darien Gray
Diane Kaiser
Sherice Lotts
Chris MacCathern
Lisa Madison

Jeff Malk
James May
Tanner McCullom
Robert Miller
Clark Mueller
Tyler Odell

Jessica Primer
Bruce Prothe
Isabella Reid
Joyce Rodgers
Bill Schroeder
Betty Smith

Rebecca Snyder
Amanda Walker
Kevin Walsh

2015 Perfect Attendance

\$100 Cash Award

Kathleen Blain
Anna Burk
Michael Bush
Bryan Durst
James Fullenkamp
Mary Ann Gibson
Rhonda Haun

Kurt Jeffries
Mae Lay
Roy Matsuda
Noel Mc Cullagh
Henrietta Middle-
brooks
Richard Nuckols

Mary Nuxoll
Rex Roberts
William Rollings
Jason Smith
David Wade
Terry Walker

Perfect Attendance Honorable Mention

Douglas Cook
Denise Cornelius
Shirley Hicks

Tony Kanady
Patrick Mcree
Connie Raney

5 Year Service Award

Robert Anderson Sr.

Elaine Higgs

Dan Baker

Robert Monteith

Mark Beyers

David Park

Beth Buchholz

Bruce Prothe

Angela Cothorn

Colleen Yundt

Teresa Cuellar

10 Year Award

Mike Bush

WE ♥ OUR
EMPLOYEES

OH NO... MAVERICK HAS FALLEN AND HE CAN'T GET UP!

Maverick would like to remind you to be super safe on the snow. He fell recently because he forgot to use his ice cleats and ice melt that ESS Clean provides for employees.

He's feeling better now, but wants you to avoid his mistake!



MOPPING DURING WINTER WEATHER

As the temperatures keep falling, it is a good possibility for snow and ice. Ice melt and salt are huge problem for cleaners. The residue from these items can be hard to remove from floors. Please keep these few things in mind when mopping up salt residue. Be sure to change mop water often and use a clean mop head to begin with each day. You may have to change your mop head more often if rinsing it doesn't seem to help. When the threat of ice and snow are over, sweep salt away from any entrances. This will keep the salt from being tracked into the building.

Brittany Babbs



TO OUR NEW STAFF!



Julianna Huck, Employment Manager

Julianna, who also goes by "Julie" joined the ESS Team in 2015 as Employment Manager. She has over twenty years of experience in Human Resources, and has a Bachelor of Science degree in Retail Merchandising with minors in Business Administration and Marketing. Julianna has lived in Arizona, California, Tennessee, Indiana and Illinois. She loves traveling, flower gardening, crafts, decorating, reading and movies. When she is not working, Julie likes to visit her three brothers and five nieces and nephews.

Shelly Perry, Bloomington Office Manager

Shelly joined the ESS Team in 2016 after thirteen years in the retail industry as a Manager. Shelly is from San Diego, California and moved to Illinois 16 years ago. Shelly is passionate about animal rescue, and works with several rescue organizations in the area in various capacities. Often you will find Shelly and her Weimaraner, Sully on various adventures. Other hobbies include taking dance classes, strongman training, cross-fit, running, furniture making, and watching marvel movies.



Jacob Shaw, Operations Manager

Jacob came to ESS Clean with fifteen years of experience in Purchasing and Marketing. Jacob grew up in the Champaign/Urbana area, graduating from Centennial High School and earning a degree in Kinesiology from the University of Illinois. Unfortunately, Jacob is a huge Buckeye fan! He enjoys hiking, camping, grilling, and of course, watching The Ohio State football and basketball teams. Jacob is married with two daughters who both play softball and piano (not at the same time).

HIGHLIGHTS FROM THE 2015 ESS ANNUAL PARTY!

And the Winners Are...

DIANE KAISER
40" Vizio SmartTV

ELIZABETH RINEHART
iPad Air

TONYA ERVIN
iPod



Ugly Sweater Contest Winner:
GREG HAHN
\$100 Macy's Gift Certificate



ESS Clean, Inc.

2406 East University Avenue
P.O. Box 17067
Urbana, IL 61803-7067

PLACE
STAMP
HERE

LOOKING FOR EXTRA \$\$\$?

Fill in for extra hours/OT.

Day and evening shifts
are available.

For more information,
contact Jacob Shaw:
Jacob@essclean.com